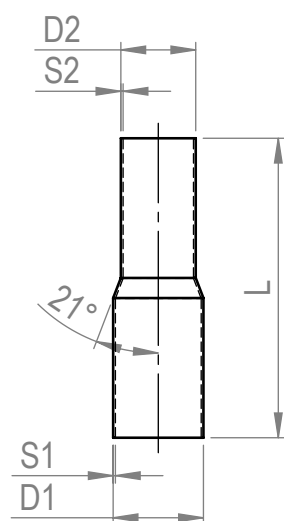


Stainless steel reducers



- Outer diameters: 38.0 to 168.3 mm
- Laser-cut
- Deburred
- Concentric version
- Widened with 21° degree

**special models
at request**

Stainless steel reducers					
D1 Diameter x wall	D2 Diameter x wall	Length L	Weight	Article number	
40.0 x 1.5 mm	38.0 x 1.5 mm	150 mm	0.21 kg	80401RZ02	
45.0 x 1.5 mm	38.0 x 1.5 mm	150 mm	0.22 kg	80451RZ01	
45.0 x 1.5 mm	40.0 x 1.5 mm	120 mm	0.18 kg	80451RZ02	
48.3 x 2.0 mm	38.0 x 1.5 mm	200 mm	0.31 kg	80481RZ02	
48.3 x 2.0 mm	40.0 x 1.5 mm	200 mm	0.32 kg	80481RZ01	
50.0 x 1.5 mm	38.0 x 1.5 mm	150 mm	0.24 kg	80501RZ05	
50.0 x 1.5 mm	38.0 x 1.5 mm	200 mm	0.32 kg	80501RZ02	
50.0 x 1.5 mm	40.0 x 1.5 mm	120 mm	0.20 kg	80501RZ01	
50.0 x 1.5 mm	40.0 x 1.5 mm	150 mm	0.24 kg	80501RZ15	
50.0 x 1.5 mm	40.0 x 1.5 mm	200 mm	0.33 kg	80501RZ04	
50.0 x 1.5 mm	45.0 x 1.5 mm	120 mm	0.21 kg	80501RZ06	
50.0 x 1.5 mm	45.0 x 1.5 mm	150 mm	0.26 kg	80501RZ20	
50.0 x 1.5 mm	45.0 x 1.5 mm	200 mm	0.34 kg	80501RZ12	
54.0 x 2.0 mm	38.0 x 1.5 mm	200 mm	0.33 kg	80541RZ01	
54.0 x 2.0 mm	38.0 x 1.5 mm	300 mm	0.50 kg	80541RZ08	
54.0 x 2.0 mm	40.0 x 1.5 mm	150 mm	0.26 kg	80541RZ07	
54.0 x 2.0 mm	40.0 x 1.5 mm	200 mm	0.34 kg	80541RZ09	
54.0 x 2.0 mm	45.0 x 1.5 mm	150 mm	0.27 kg	80541RZ10	
54.0 x 2.0 mm	45.0 x 1.5 mm	200 mm	0.36 kg	80541RZ02	
54.0 x 2.0 mm	50.0 x 1.5 mm	150 mm	0.28 kg	80541RZ11	
54.0 x 2.0 mm	50.0 x 1.5 mm	200 mm	0.38 kg	80541RZ04	
54.0 x 2.0 mm	50.0 x 2.0 mm	200 mm	0.50 kg	80541RZ06	

Special models at request

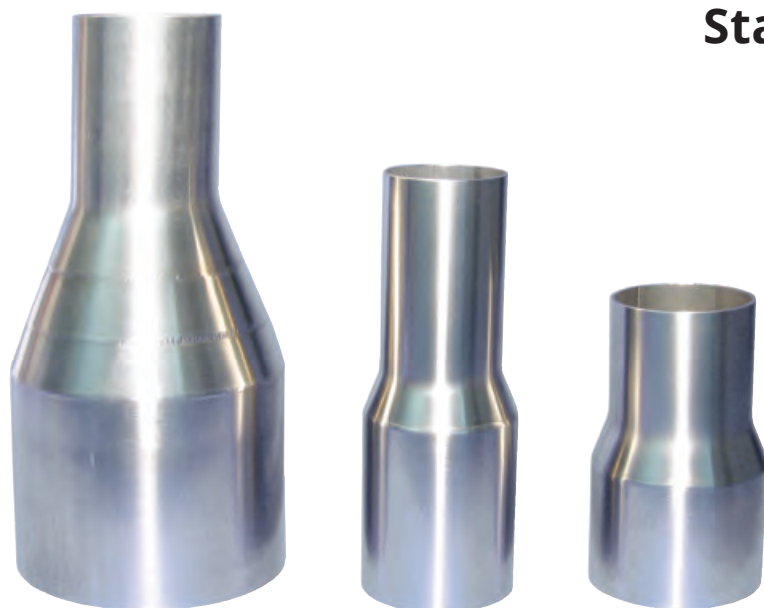
**special models
at request**

Stainless steel reducers

D1 Diameter x wall	D2 Diameter x wall	Length L	Weight	Article number
60.3 x 1.5 mm	38.0 x 1.5 mm	200 mm	0.36 kg	80601RZ18
60.3 x 2.0 mm	40.0 x 1.5 mm	150 mm	0.28 kg	80601RZ24
60.3 x 2.0 mm	40.0 x 1.5 mm	185 mm	0.34 kg	80601RZ22
60.3 x 2.0 mm	40.0 x 1.5 mm	200 mm	0.37 kg	80601RZ10
60.3 x 2.0 mm	50.0 x 1.5 mm	150 mm	0.30 kg	80601RZ09
60.3 x 1.6 mm	50.0 x 1.5 mm	200 mm	0.40 kg	80601RZ23
60.3 x 2.0 mm	38.0 x 1.5 mm	200 mm	0.36 kg	80601RZ08
60.3 x 2.0 mm	45.0 x 1.5 mm	200 mm	0.38 kg	80601RZ06
60.3 x 2.0 mm	48.3 x 2.0 mm	200 mm	0.52 kg	80601RZ15
60.3 x 2.0 mm	50.0 x 1.5 mm	200 mm	0.40 kg	80601RZ04
60.3 x 2.0 mm	54.0 x 2.0 mm	200 mm	0.42 kg	80601RZ07
63.5 x 2.0 mm	50.0 x 1.5 mm	150 mm	0.41 kg	80631RZ05
65.0 x 2.0 mm	40.0 x 1.5 mm	200 mm	0.51 kg	80651RZ11
65.0 x 2.0 mm	45.0 x 1.5 mm	200 mm	0.53 kg	80651RZ10
65.0 x 2.0 mm	50.0 x 1.5 mm	200 mm	0.42 kg	80651RZ02
65.0 x 2.0 mm	54.0 x 2.0 mm	200 mm	0.57 kg	80651RZ14
65.0 x 2.0 mm	55.0 x 1.5 mm	200 mm	0.44 kg	80651RZ16
65.0 x 2.0 mm	60.3 x 2.0 mm	150 mm	0.45 kg	80651RZ06
65.0 x 2.0 mm	60.3 x 2.0 mm	200 mm	0.60 kg	80651RZ07
70.0 x 2.0 mm	38.0 x 1.5 mm	200 mm	0.52 kg	80701RZ03
70.0 x 2.0 mm	40.0 x 1.5 mm	300 mm	0.80 kg	80701RZ08
70.0 x 2.0 mm	45.0 x 1.5 mm	200 mm	0.56 kg	80701RZ09
70.0 x 2.0 mm	50.0 x 1.5 mm	200 mm	0.51 kg	80701RZ01
70.0 x 2.0 mm	50.0 x 2.0 mm	200 mm	0.58 kg	80701RZ14
70.0 x 2.0 mm	54.0 x 2.0 mm	150 mm	0.45 kg	80701RZ23
70.0 x 2.0 mm	54.0 x 2.0 mm	200 mm	0.60 kg	80701RZ02
70.0 x 2.0 mm	60.3 x 2.0 mm	200 mm	0.63 kg	80701RZ05
70.0 x 2.0 mm	63.5 x 2.0 mm	200 mm	0.65 kg	80701RZ22
70.0 x 2.0 mm	65.0 x 2.0 mm	200 mm	0.65 kg	80701RZ06

Special models at request

Stainless steel reducers



Stainless steel reducers				
D1 Diameter x wall	D2 Diameter x wall	Length L	Weight	Article number
76.1 x 2.0 mm	38.0 x 1.5 mm	250 mm	0.69 kg	80761RZ18
76.1 x 2.0 mm	40.0 x 1.5 mm	250 mm	0.71 kg	80761RZ17
76.1 x 2.0 mm	45.0 x 1.5 mm	250 mm	0.73 kg	80761RZ15
76.1 x 2.0 mm	48.3 x 2.0 mm	250 mm	0.75 kg	80761RZ14
76.1 x 2.0 mm	50.0 x 1.5 mm	200 mm	0.53 kg	80761RZ05
76.1 x 2.0 mm	50.0 x 1.5 mm	250 mm	0.76 kg	80761RZ16
76.1 x 2.0 mm	54.0 x 2.0 mm	250 mm	0.79 kg	80761RZ13
76.1 x 2.0 mm	60.3 x 2.0 mm	120 mm	0.40 kg	80761RZ06
76.1 x 2.0 mm	60.3 x 2.0 mm	150 mm	0.50 kg	80761RZ29
76.1 x 2.0 mm	60.3 x 2.0 mm	200 mm	0.66 kg	80761RZ11
76.1 x 2.0 mm	63.5 x 2.0 mm	120 mm	0.41 kg	80761RZ07
76.1 x 2.0 mm	65.0 x 2.0 mm	200 mm	0.68 kg	80761RZ12
76.1 x 2.0 mm	65.0 x 2.0 mm	300 mm	1.02 kg	80761RZ08
76.1 x 2.0 mm	70.0 x 2.0 mm	200 mm	0.71 kg	80761RZ10
80.0 x 2.0 mm	40.0 x 1.5 mm	350 mm	1.01 kg	80801RZ15
80.0 x 2.0 mm	45.0 x 1.5 mm	350 mm	1.06 kg	80801RZ14
80.0 x 2.0 mm	50.0 x 1.5 mm	300 mm	0.95 kg	80801RZ08
80.0 x 2.0 mm	50.0 x 2.0 mm	300 mm	0.95 kg	80801RZ07
80.0 x 2.0 mm	54.0 x 2.0 mm	300 mm	0.97 kg	80801RZ12
80.0 x 2.0 mm	60.3 x 2.0 mm	200 mm	0.68 kg	80801RZ01
80.0 x 2.0 mm	65.0 x 2.0 mm	200 mm	0.71 kg	80801RZ02
80.0 x 2.0 mm	70.0 x 2.0 mm	200 mm	0.73 kg	80801RZ10
80.0 x 2.0 mm	76.1 x 2.0 mm	200 mm	0.76 kg	80801RZ11

Special models at request

Stainless steel reducers

D1 Diameter x wall	D2 Diameter x wall	Length L	Weight	Article number
84.0 x 2.0 mm	60.3 x 2.0 mm	250 mm	0.88 kg	80841RZ06
84.0 x 2.0 mm	70.0 x 2.0 mm	250 mm	0.93 kg	80841RZ05
84.0 x 2.0 mm	76.1 x 2.0 mm	250 mm	0.97 kg	80841RZ07
84.0 x 2.0 mm	80.0 x 2.0 mm	250 mm	0.99 kg	80841RZ04
88.9 x 2.0 mm	60.3 x 2.0 mm	300 mm	1.09 kg	80881RZ14
88.9 x 2.0 mm	65.0 x 2.0 mm	300 mm	1.12 kg	80881RZ13
88.9 x 2.0 mm	70.0 x 2.0 mm	300 mm	1.16 kg	80881RZ12
88.9 x 2.0 mm	76.1 x 2.0 mm	300 mm	1.20 kg	80881RZ09
88.9 x 2.0 mm	80.0 x 2.0 mm	300 mm	1.23 kg	80881RZ02
88.9 x 2.0 mm	84.0 x 2.0 mm	300 mm	1.26 kg	80881RZ10
100.0 x 1.5 mm	50.0 x 1.5 mm	300 mm	0.82 kg	81001RZ03
100.0 x 1.5 mm	65.0 x 2.0 mm	300 mm	1.02 kg	81001RZ02
100.0 x 1.5 mm	70.0 x 2.0 mm	300 mm	1.06 kg	81001RZ09
100.0 x 1.5 mm	80.0 x 2.0 mm	300 mm	1.13 kg	81001RZ07
100.0 x 1.5 mm	88.9 x 2.0 mm	300 mm	1.20 kg	81001RZ04
101.6 x 2.0 mm	60.3 x 2.0 mm	300 mm	1.18 kg	81011RZ12
101.6 x 2.0 mm	63.5 x 2.0 mm	300 mm	1.20 kg	81011RZ18
101.6 x 2.0 mm	65.0 x 2.0 mm	300 mm	1.21 kg	81011RZ07
101.6 x 2.0 mm	70.0 x 2.0 mm	300 mm	1.25 kg	81011RZ10
101.6 x 2.0 mm	76.1 x 2.0 mm	300 mm	1.29 kg	81011RZ11
101.6 x 2.0 mm	80.0 x 2.0 mm	300 mm	1.32 kg	81011RZ08
101.6 x 2.0 mm	84.0 x 2.0 mm	300 mm	1.35 kg	81011RZ09
101.6 x 2.0 mm	88.9 x 2.0 mm	300 mm	1.39 kg	81011RZ02
104.0 x 2.0 mm	54.0 x 2.0 mm	300 mm	1.15 kg	81041RZ12
104.0 x 2.0 mm	60.3 x 2.0 mm	300 mm	1.19 kg	81041RZ01
104.0 x 2.0 mm	70.0 x 2.0 mm	300 mm	1.27 kg	81041RZ27
104.0 x 2.0 mm	76.1 x 2.0 mm	300 mm	1.31 kg	81041RZ08
104.0 x 2.0 mm	80.0 x 2.0 mm	300 mm	1.34 kg	81041RZ13
104.0 x 2.0 mm	84.0 x 2.0 mm	300 mm	1.37 kg	81041RZ06
104.0 x 2.0 mm	88.9 x 2.0 mm	300 mm	1.41 kg	81041RZ09
104.0 x 2.0 mm	100.0 x 1.5 mm	300 mm	1.31 kg	81041RZ03
104.0 x 2.0 mm	101.6 x 2.0 mm	300 mm	1.50 kg	81041RZ10

Special models at request



Stainless steel reducers

Stainless steel reducers				
D1 Diameter x wall	D2 Diameter x wall	Length L	Weight	Article number
114.3 x 2.0 mm	65.0 x 2.0 mm	300 mm	1.31 kg	81141RZ10
114.3 x 2.0 mm	80.0 x 2.0 mm	300 mm	1.42 kg	81141RZ31
114.3 x 2.0 mm	88.9 x 2.0 mm	200 mm	0.99 kg	81141RZ15
114.3 x 2.0 mm	88.9 x 2.0 mm	300 mm	1.48 kg	81141RZ26
114.3 x 2.0 mm	100.0 x 1.5 mm	300 mm	1.39 kg	81141RZ29
114.3 x 2.0 mm	101.6 x 2.0 mm	200 mm	1.05 kg	81141RZ14
114.3 x 2.0 mm	104.0 x 2.0 mm	200 mm	1.06 kg	81141RZ13
114.3 x 2.0 mm	104.0 x 2.0 mm	300 mm	1.60 kg	81141RZ08
114.3 x 2.0 mm	108.0 x 2.0 mm	300 mm	1.63 kg	81141RZ30
129.0 x 2.0 mm	84.0 x 2.0 mm	400 mm	2.08 kg	81291RZ15
129.0 x 2.0 mm	88.9 x 2.0 mm	400 mm	2.12 kg	81291RZ06
129.0 x 2.0 mm	104.0 x 2.0 mm	300 mm	1.71 kg	81291RZ04
129.0 x 2.0 mm	104.0 x 2.0 mm	400 mm	2.27 kg	81291RZ05
129.0 x 2.0 mm	114.3 x 2.0 mm	200 mm	1.19 kg	81291RZ21
129.0 x 2.0 mm	114.3 x 2.0 mm	300 mm	1.78 kg	81291RZ03
154.0 x 2.0 mm	104.0 x 2.0 mm	300 mm	1.89 kg	81541RZ23
154.0 x 2.0 mm	104.0 x 2.0 mm	450 mm	2.84 kg	81541RZ12
154.0 x 2.0 mm	114.3 x 2.0 mm	450 mm	2.95 kg	81541RZ05
154.0 x 2.0 mm	129.0 x 2.0 mm	300 mm	2.08 kg	81541RZ04
154.0 x 2.0 mm	129.0 x 2.0 mm	450 mm	3.17 kg	81541RZ19
154.0 x 2.0 mm	139.7 x 2.0 mm	450 mm	3.24 kg	81541RZ07

**larger dimensions
at request**

Special models at request

Glass reducers

other dimensions
available at request



Glass reducers			
D1 Diameter x wall	D2 Diameter x wall	Length L	Article number
66.0 x .0 mm	56 x 5.0 mm	200 mm	8066BRZ01

HVA NIRO® Stainless steel reducers



HVA NIRO® Stainless steel reducers				
D1 Diameter x wall	D2 Diameter x wall	Length L	Weight	Article number
40.0 x 1.5 mm	38.0 x 1.5 mm	150 mm	0.20 kg	80401RZ02-9
○ 45.0 x 1.5 mm	40.0 x 1.5 mm	120 mm	0.18 kg	80451RZ02-9
○ 45.0 x 1.5 mm	38.0 x 1.5 mm	110 mm	0.33 kg	80451RZ04-9
50.0 x 1.5 mm	45.0 x 1.5 mm	150 mm	0.24 kg	80501RZ20-9
○ 50.0 x 1.5 mm	45.0 x 1.5 mm	200 mm	0.34 kg	80501RZ12-9
○ 50.0 x 1.5 mm	40.0 x 1.5 mm	120 mm	0.16 kg	80501RZ01-9
50.0 x 1.5 mm	40.0 x 1.5 mm	150 mm	0.24 kg	80501RZ15-9
○ 50.0 x 1.5 mm	40.0 x 1.5 mm	200 mm	0.30 kg	80501RZ04-9
○ 50.0 x 1.5 mm	38.0 x 1.5 mm	150 mm	0.22 kg	80501RZ05-9
○ 60.3 x 2.0 mm	50.0 x 1.5 mm	150 mm	0.30 kg	80601RZ09-9
60.3 x 2.0 mm	50.0 x 1.5 mm	200 mm	0.45 kg	80601RZ04-9
○ 60.3 x 2.0 mm	45.0 x 1.5 mm	200 mm	0.44 kg	80601RZ06-9
○ 60.3 x 2.0 mm	40.0 x 1.5 mm	200 mm	0.37 kg	80601RZ10-9
○ 60.3 x 1.5 mm	50.0 x 1.5 mm	120 mm	0.22 kg	80601RZ21-9
60.3 x 1.5 mm	45.0 x 1.5 mm	125 mm	0.22 kg	80601RZ19-9
○ 60.3 x 1.5 mm	38.0 x 1.5 mm	128 mm	0.23 kg	80601RZ20-9
○ 65.0 x 2.0 mm	60.3 x 2.0 mm	200 mm	0.65 kg	80651RZ07-9
○ 65.0 x 2.0 mm	50.0 x 1.5 mm	200 mm	0.42 kg	80651RZ02-9

Special models at request

○ = no stock article | available at short notice